

WORKSPACE SOLUTIONS

MULTICOM



Kinnarps

MULTICOM OFFERS SYSTEMATIC FREEDOM OF CHOICE. A SERIES OF MEETING TABLES AND SYSTEM TABLES DESIGNED TO SUPPORT INTERACTIVE WAYS OF WORKING IN CONTEMPORARY OFFICES. A WIDE RANGE OF TOPS IN DIFFERENT SHAPES, SIZES AND MATERIALS MAKE IT EASY TO DESIGN CREATIVE SOLUTIONS WITH THE ROOM AS THE STARTING POINT. HIGH-QUALITY, FLEXIBLE INTERIOR DESIGN THAT LASTS.





COOPERATION AT ITS BEST

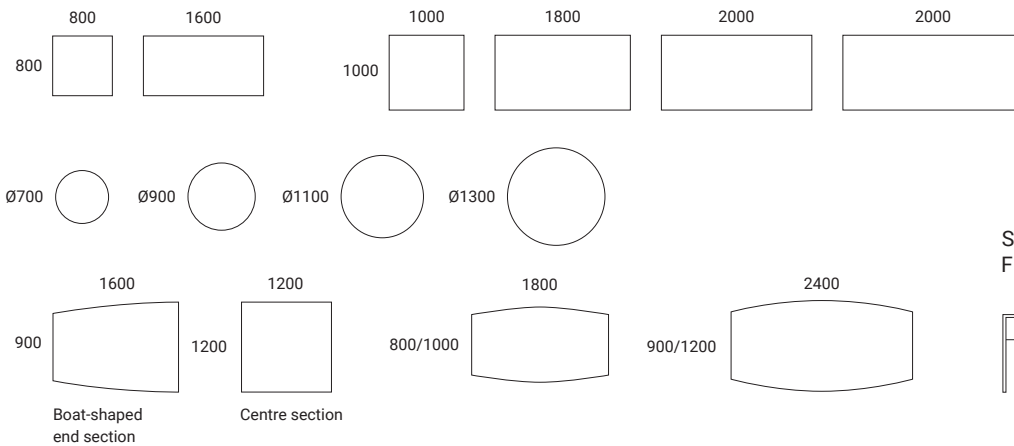
- Choose between more traditional conference tables or system solutions that suit how you cooperate – from working meetings to conferences, training sessions, video meetings and presentations.
- Solutions for cable management technology, audio and video, where individual modules in the cable trays can easily be substituted as and when they are needed.
- The tabletops are available in many different materials: stained ash, veneer, laminate and linoleum.
- A wide selection of underframes and feet give a high degree of functionality and scope for variation in design.
- The series also includes a freestanding stand-up meeting table in white laminate, to add to the dynamics of the office environment.

MEETING TABLES

With tabletops in three shapes and a range of different sizes, you can create meeting tables for all kinds of meeting rooms.



Fixed height 740 mm. Selected tops (round tabletops) are available with 720-1,150 mm gas spring.

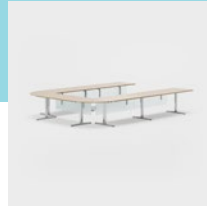
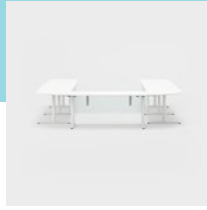
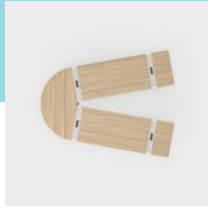
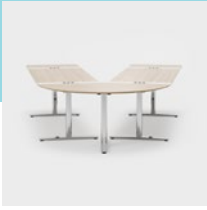


TOP 23 mm, chipboard with wood veneer (birch, beech, oak, ash, stained ash) and solid wood lipping, laminate (birch, beech, oak, grey oak, walnut, amouk, white, light grey, dark grey, grey-white). **UNDERFRAME** Made of steel, powder-coated or chrome (trivalent). T-base with round or square pillar. Round pillar with round plate or square pillar with square plate. Table underframe with adjustable 720-1,150 mm gas spring. **TABLE HEIGHT** 740 mm. **OPTION** Conference cable trays with space for connection modules for electricity and media connection. **SCALE** 1:100. **UNIT** mm.

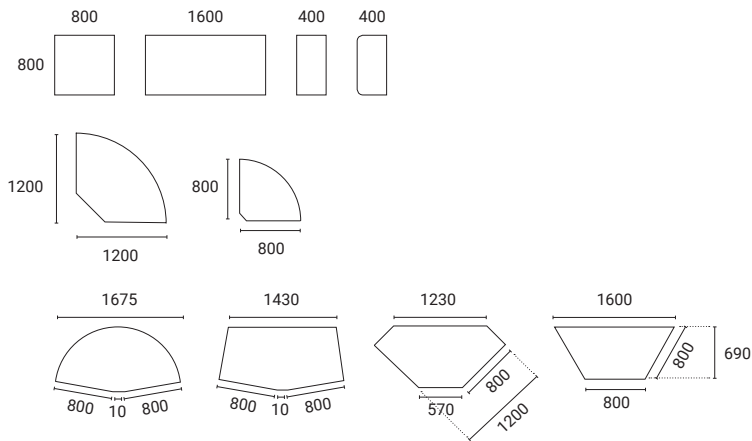


SYSTEM TABLES

On the basis of your meeting culture and the design of your rooms, you create flexible systems that support creativity and dialogue. From different alphabet combinations to cinema and school seating.



Fixed height 740 mm.



TOP 23 mm, chipboard with wood veneer (birch, beech, oak, ash, stained ash) and solid wood lipping, laminate (birch, beech, oak, grey oak, walnut, amouk, white, light grey, dark grey, grey-white). **UNDERFRAME** Made of steel, powder-coated or chrome (trivalent). T-base with round or square pillar. **TABLE HEIGHT** 740 mm. **OPTIONS** Panels, cabling, trolleys for storage and transport of tabletops and legs. **SCALE** 1:100. **UNIT** mm.



FUNCTIONS & OPTIONS



FRONT PANEL IN FROSTED GLASS

A detail with a discreet screening effect. Fits system tables.



FOLDABLE CABLE DUCT

Can be folded down at both ends. Fits system tables.



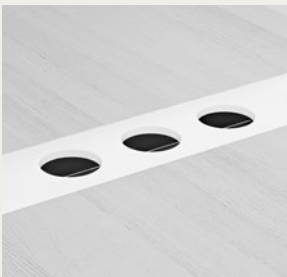
MAGNETIC VERTICAL CABLE UMBILICAL

Fits system tables.



LEG WITH CABLE OUTLETS

Possibility of electrical and RJ45 network sockets with integrated LED lighting in a frosted acrylic panel. Fits system tables.



LEG WITH DRINKS HOLDER

Connecting leg frame with top part in frosted acrylic glass for glasses and bottles. Lacquered or in chrome. Fits system tables.



CONNECTION MODULE

Available in two sizes. One or more modules can be easily updated for new technology. Fits meeting tables.



CONFERENCE CABLE TRAY.

Available in two sizes. Cover can be opened at the side in two directions. Fits meeting tables.



STAND-UP MEETING TABLE

Freestanding stand-up meeting table adds extra flexibility in larger meeting rooms or office environments.

VENEER



Birch



Beech



Oak



Oak (dark brown)



Ash (white-pigmented)



Ash White



Ash Greyish Blue



Ash Dark Blue



Ash Greyish Green



Ash Dark Green



Ash Soft Pink



Ash Dark Red



Ash Medium Grey



Ash Dark Grey



Ash Black



Ash Medium Brown

LINOLEUM



Black

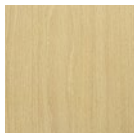
READ MORE ABOUT OUR PRODUCTS AND MATERIALS AT KINNARPS.COM



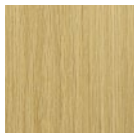
LAMINATE



Birch



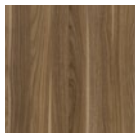
Beech



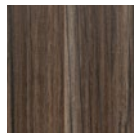
Oak



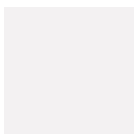
Grey oak



Walnut



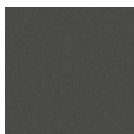
Amouk



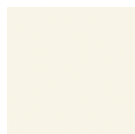
White



Light grey



Dark grey

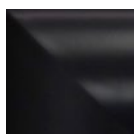


Grey white

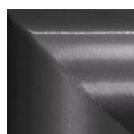
METAL



White



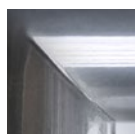
Black



Dark grey



Silver grey



Chrome



**KINNARPS
COLOUR STUDIO**

Kinnarps Colour Studio is our collection of materials that gives you hundreds of sustainable, creative and attractive materials, colours and patterns.

[Kinnarps.com/kcs](https://www.kinnarps.com/kcs)

WORKSPACE SOLUTIONS



KINNARPS.COM