

SUCCESSFUL INTERIORS

OPTI

SMART OPTIONS & ACCESSORIES
FOR DESKS AND MEETING TABLES



Opti is our smart range of easily accessible and user-friendly options & accessories for desks and meeting tables. Tested for the best possible ergonomics, and tested for maximum quality and safety. They provide the functionality you need and provide considered and well-designed solutions that contribute towards an organised environment. The range includes different solutions for cable management, which are flexible and easy to install, and which give a tidy look. There are also options for power and network outlets that are positioned to be close at hand. Regardless of the type of working environment or meeting space, you can find a customised solution for connecting or charging. Our accessories also include ergonomic solutions that make your working day easier - such as, for example, CPU holders, relaxing armrests for your desk, and adjustable monitor arms.

CONTENTS

Power and connection..... 04

Cable management..... 12

CPU holders..... 20

Monitor arms..... 22

Other 26





POWER & CONNECTION

Having technology close at hand and easily accessible with a tidy impression makes work easier and more efficient, both at the desk and in the meeting room. We have many variations of stylish and functional connections for power and charging, both concealed and visible. All are tried, tested and accredited by a third-party laboratory.



POWERBOX

O663

Integrated into the table for easy access to electrical and network connections. Spacious compartments to conceal cables. Can also be closed when plugged in.

Connections: 3 power sockets

Dimensions: 294x170x60 mm
(Hole pattern: 279x155 mm)

Colour: Silver, black or white

Goes with: Series[P], Oberon, Nano, Nexus and Fields



POWERBOX

O663N

Integrated into the table for easy access to electrical and network connections. Spacious compartments to conceal cables. Can also be closed when plugged in.

Connections: 3 power sockets,
1 network connection

and 1 USB connection.

Dimensions: 294x170x60 mm
(Hole pattern: 279x155 mm)

Colour: Silver, black or white

Goes with: Series[P], Oberon, Nano, Nexus and Fields



POWERBOX

PB663

Integrated into the table for easy access to electrical and network connections. Spacious compartments to conceal cables. Can also be closed when plugged in. Delivered with Wieland and an extension cord in several sizes.

Connections: 2 power sockets,
2 charging USB A connectors
(5.2V/2.15A in total) and
1 optional module.

Dimensions: 294x170x60 mm
(Hole pattern: 279x155 mm)

Colour: Silver, black or white
Goes with: Series[P], Oberon, Nano, Nexus



POWERBOX PB664

Integrated into the table for easy access to electrical and network connections. Spacious compartments to conceal cables. Can also be closed when plugged in. Delivered with Wieland and an extension cord in several sizes.

Connections: 3 power sockets and 1 optional module.
Dimensions: 294x170x60 mm (Hole pattern: 279x155 mm)
Colour: Silver, black or white
Goes with: Series[P], Oberon, Nano, Nexus



POWER CLAMP PCL1-S

Flexible and movable placement by mounting around the table top. For easily accessible electrical and network connection. Delivered with Wieland and an extension cord in several sizes.

Connections: 2 power sockets, 2 charging USB A connectors (5.2V/2.15A in total) 1 optional module.
Dimensions: 241x85.5x88 mm
Colour: White
Goes with: Series[E] one, Series[P], Oberon, Nano, Nexus and Polaris



CONFERENCE BOX SMALL ACB1-S

Solid storage unit in sheet metal with a lid that can be opened in two directions. Space for electrical modules, multiway sockets and cables.

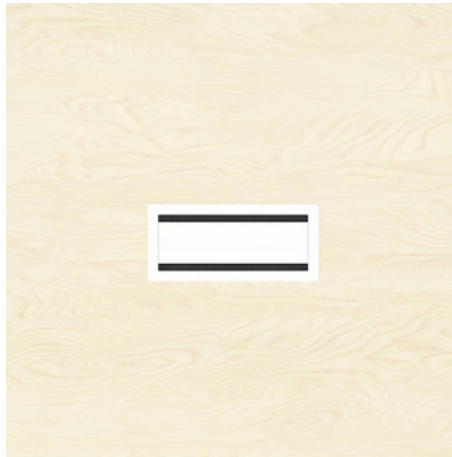
Dimensions: 335x150x155 mm (Hole pattern: 302x134 mm)
Colour: Silver, black or white
Goes with: Series[E] one conference table, Oberon conference table, Nexus conference table and Multicom



CONFERENCE BOX LARGE ACB1-L

Solid storage unit in sheet metal with a lid that can be opened in two directions. Space for electrical modules, multiway sockets and cables.

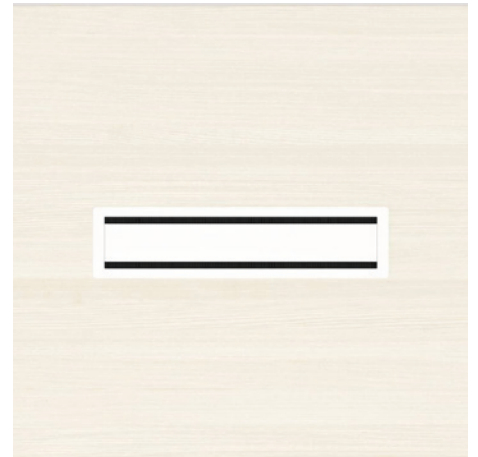
Dimensions: 515x150x155 mm (Hole pattern: 482x134 mm)
Colour: Silver, black or white
Goes with: Series[E] one conference table, Oberon conference table, Nexus conference table and Multicom



CONFERENCE LID SMALL ACB2-S

Solid sheet metal lid that can be opened in two directions. Should be supplemented with a cable tray.

Dimensions: 335x150x42 mm (Hole pattern: 302x134 mm)
Colour: Silver, black or white
Goes with: Series[E] one conference table, Oberon conference table, Nexus conference table.



CONFERENCE LID LARGE ACB2-L

Solid sheet metal lid that can be opened in two directions. Should be supplemented with a cable tray.

Dimensions: 515x150x42 mm (Hole pattern: 482x134 mm)
Colour: Silver, black or white
Goes with: Series[E] one conference table, Oberon conference table, Nexus conference table.



CONFERENCE MODULE APM3 ACB33

Electrical module with lid, integrated into the tabletop. Delivered with Wieland and an extension cord in several sizes.

Connections: 2 power sockets, 2 charging USB A (5.2V/2.15A in total), 1 optional module

Dimensions: 300x87x53 mm
(Hole pattern: 268x61 mm)

Colour: Brushed aluminium

Goes with: Series[P], Oberon, Nano, Nexus



CONFERENCE MODULE APM4 ACB34

Electrical module with lid, integrated into the tabletop. Delivered with Wieland and an extension cord in several sizes.

Connections: 3 power sockets, 1 optional module

Dimensions: 300x87x53 mm
(Hole pattern: 268x61 mm)

Colour: Brushed aluminium

Goes with: Series[P], Oberon, Nano, Nexus



ELECTRICAL MODULE 1 APM1

Extension cable that fits in conference boxes ACB1-S, ACB1-L, etc. or in a separate cable tray.

Connections: 4 power sockets

Dimensions: 200x54x40 mm

Colour: Black

Goes with: Universal



ELECTRICAL MODULE 2 APM2

Extension cable that fits in conference box ACB1-L, etc. or in a separate cable tray.

Connections: 6 power sockets

Dimensions: 350x56x41 mm

Colour: Black

Goes with: Universal



ELECTRICAL MODULE 3 APM3

Flexible electrical and network module for placement in conference boxes ACB1-S or ACB1-L, etc. Delivered with Wieland and an extension cord in several sizes.

Connections: 2 power sockets, 2 charging USB A (5.2V/2.15A in total), 1 optional module.

Dimensions: 262x44x51 mm

Colour: Black / silver

Goes with: Universal



ELECTRICAL MODULE 4 APM4

Flexible electrical and network module for placement in conference boxes ACB1-S or ACB1-L, etc. Delivered with Wieland and an extension cord in several sizes.

Connections: 3 power sockets, 1 optional module.

Dimensions: 262x44x51 mm

Colour: Black / silver

Goes with: Universal



ELECTRICAL MODULE 5

APM5

Flexible electrical and network module for placement in conference box ACB1-L, etc. Delivered with Wieland and an extension cord in several sizes.

Connections: 4 power sockets, 2 charging USB A (5.2V/2.15A total), 3 optional modules

Dimensions: 443x44x51 mm

Colour: Black / silver

Goes with: Universal



COVER LID A

ACM-A

A stylish lid that conceals holes without a module.

Colour: Black

Goes with: Goes with all of Kinnarps' configurable electrical modules in optional socket module



SOCKET MODULE B

ACM-B

The module contains 1 stereo port, 1 HDMI 2.0 port and 1 VGA port 3.5 mm stereo.

Colour: Black

Goes with: Goes with all of Kinnarps' configurable electrical modules in optional socket module



SOCKET MODULE C

ACM-C

The module contains 1 stereo port and 1 VGA port 3.5 mm stereo.

Colour: Black

Goes with: Goes with all of Kinnarps' configurable electrical modules in optional socket module



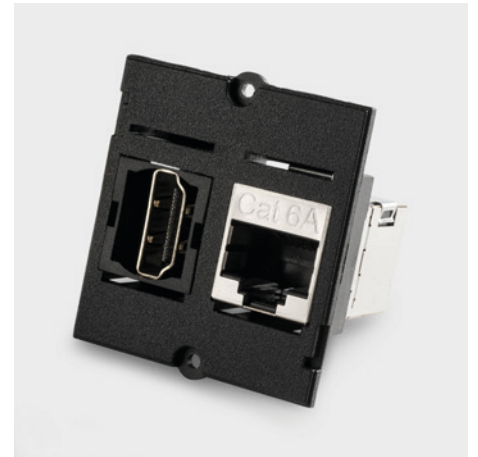
SOCKET MODULE D

ACM-D

The module contains 1 HDMI 2.0 port and 1 display port.

Colour: Black

Goes with: Goes with all of Kinnarps' configurable electrical modules in optional socket module



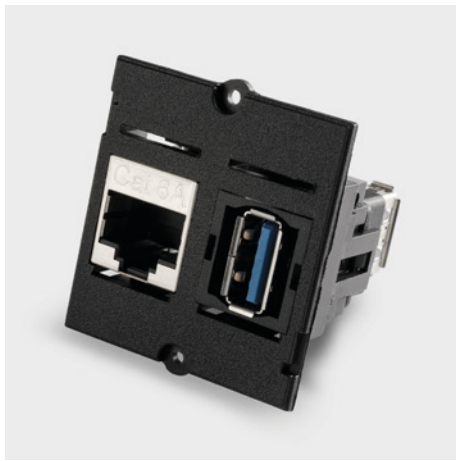
SOCKET MODULE EGI

ACM-EGI

The module contains 1 RJ45 2.0 port and 1 HDMI 2.0 port.

Colour: Black

Goes with: Goes with all of Kinnarps' configurable electrical modules in optional socket module



SOCKET MODULE EGH

ACM-EGH

The module contains 1 RJ45 port and 1 non-charging USB 3.0 port.

Colour: Black

Goes with: Goes with all of Kinnarps' configurable electrical modules in optional socket module



SOCKET MODULE EGG

ACM-EGG

The module contains 2 RJ45 ports.

Colour: Black

Goes with: Goes with all of Kinnarps' configurable electrical modules in optional socket module



SOCKET MODULE EHH

ACM-EHH

The module contains 2 non-charging USB 3.0 ports.

Colour: Black

Goes with: Goes with all of Kinnarps' configurable electrical modules in optional socket module



SOCKET MODULE EII

ACM-EII

The module contains 2 HDMI 2.0 ports.

Colour: Black

Goes with: Goes with all of Kinnarps' configurable electrical modules in optional socket module



SOCKET MODULE EHI

ACM-EHI

The module contains 1 non-charging USB 3.0 port and 1 HDMI 2.0 port.

Colour: Black

Goes with: Goes with all of Kinnarps' configurable electrical modules in optional socket module



SOCKET MODULE FG

ACM-FG

The module contains 1 RJ45 port.

Colour: Black

Goes with: Goes with all of Kinnarps' configurable electrical modules in optional socket module

SOCKET MODULES

**SOCKET MODULE FH**

ACM-FH

The module contains 1 non-charging USB 3.0 port.

Colour: Black

Goes with: Goes with all of Kinnarps' configurable electrical modules in optional socket module

**SOCKET MODULE FI**

ACM-FI

The module contains 1 HDMI 2.0 port.

Colour: Black

Goes with: Goes with all of Kinnarps' configurable electrical modules in optional socket module





POWER TRAY

PT2T51

Decorative cover tray for Power Dot 51. For 2 cable ports.

Connections: Optional installation of Power dot 51

Dimensions: 160x85x1.5 mm

Colour: Black or white

Goes with: Oberon, Nexus



POWER TRAY

PT3T51

Decorative cover tray for Power Dot 51. For 3 cable ports.

Connections: Optional installation of Power dot 51

Dimensions: 235x85x1.5 mm

Colour: Black or white

Goes with: Oberon, Nexus



POWER DOT 51

T51PD1

Power sockets for placement in 51 mm holes. Connection cable is included.

Dimensions: 51 mm (Ø57 mm wide, 65 mm deep)

Colour: Black or white

Goes with: Universal



POWER DOT 51

T51PD2

Power socket for placement in 51 mm holes. Connection cable is included.

Connections: 2 charging USB A, (5V, total max 2.4A)

Dimensions: 51 mm (Ø57 mm wide, 65 mm deep)

Colour: Black or white

Goes with: Universal



POWER DOT 80

T80PGR

Power socket for placement in 80 mm hole. The inner section can be twisted and lifted for easy installation of other cables. Connection cable is included.

Connections: 1 power socket, 4 cable ports

Dimensions: 80 mm (Ø83 mm wide, 49 mm deep)

Colour: Black or white

Goes with: Universal



WIRELESS CHARGING UNIT
T80WCU

Functional and elegant wireless charging with Qi standard for mobile phones. The power is 5W. Connection cable is included.

Dimensions: 80 mm
(Ø94 mm wide, 20 mm deep)
Colour: Black
Goes with: Universal



POWER DOT 80
T80PD1

Power socket for placement in 80 mm hole. The inner section can be twisted and lifted for easy installation of other cables. Connection cable is included.

Connections: 1 power socket,
2 charging USB A (5V/2.4A in total),
1-2 cable ports
Dimensions: 80 mm
(Ø83 mm wide, 89 mm deep)
Colour: Black or white
Goes with: Universal



POWER DOT 80
T80PD2

Power socket for placement in 80 mm hole. The inner section can be twisted and lifted for easy installation of other cables. Connection cable is included.

Connections: 1 power socket,
1 charging USB A (5V/2.4A in total),
1 USB C port (Gen 3.1), 2 cable ports
Dimensions: 80 mm
(Ø83 mm wide, 68 mm deep)
Colour: Black or white
Goes with: Universal



CABLE MANAGEMENT

Create clean work surfaces by collecting cables and power sockets. Keeping it tidy both above and below the table gives a clean and calm impression, thus making space for more creativity and productivity.



CABLE PORT
O300

For fixed placement in the tabletop. Lid and frame in anodized aluminium, should be supplemented with a cable tray.

Dimensions: 275x120x25.5 mm
(Hole pattern: 259x102 mm)
Colour: Silver
Goes with: Series[P], Oberon, Nano and Nexus



CABLE PORT T80
T80M

Stylish metal sleeve that is placed in a tabletop, 80 mm hole. A cable umbilical fixing with a removable lid.

Dimensions: 80 mm
(Ø90 mm wide, 18 mm deep)
Colour: Silver
Goes with: Universal



CABLE PORT T80
T80

Cable port for placement in 80 mm holes. Round plastic sleeve with a three-part lid to accommodate different numbers of cables.

Dimensions: 80 mm
(Ø88 mm wide, 22 mm deep)
Colour: Black, white or grey
Goes with: Universal



CABLE UMBILICAL GROMMET
T50

With edge cutout and plastic lid.
For cable port and installation of
accessories e.g. desktop screens
and monitor arms.

Dimensions: 92x70x22 mm
Colour: Silver, black or white
Goes with: Nano and Nexus



CABLE PORT
T97

Rectangular cutout in the tabletop
with a durable plastic strip.

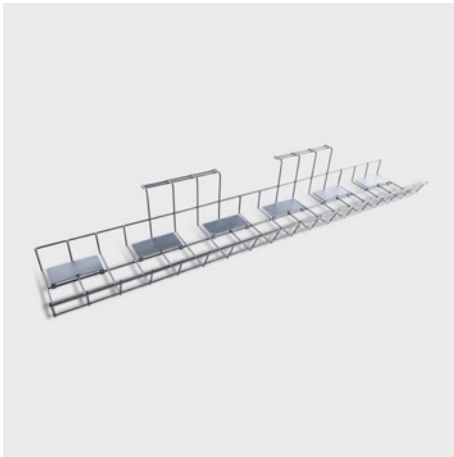
Dimensions: 97x35 mm
Colour: Silver, black or white
Goes with: Universal



CABLE PORT SCALLOP
T430

A small cutout in the tabletop with
lipping that gives the same elegant
design as the rest of the table. Use
for fasteners for e.g. monitor arms.

Dimensions: 430x35 mm
Colour: Matches the colour of the
tabletop
Goes with: Goes with Nano bench and
Nexus bench



CABLE TRAY
OACT3S

A simple and open solution for cable
management with dividers and clips.
Mounted directly in the tabletop.

Dimensions: 790x110x00 mm
(Distance from the underside of the
cable tray to the underside of the
tabletop: 105 mm)
Colour: Silver
Goes with: All desks, non-sliding
tabletop



CABLE TRAY
EACT2S

A simple and open solution for
cable management. Mounted
directly in the tabletop.

Dimensions: 490x100x80 mm
(Distance from the underside of the
cable tray to the underside of the
tabletop: 84 mm)
Colour: Silver
Goes with: All desks, non-sliding
tabletop



CABLE TRAY MESH
CTM

Spacious tray in mesh fabric that
collects and conceals cabling.
Fitted with little visibility between
the table's beams.

Dimensions: Length 750 mm, width
730 mm
Colour: Black
Goes with: Nexus conference table



CABLE TRAY **OBACT33**

Fasteners are mounted on the beam. Can become conductive and shield electrical fields through earthing.

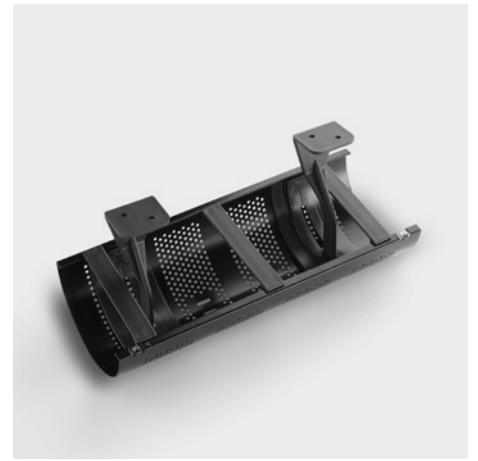
Dimensions: 330x132x69 mm
(available in the following dimensions: 330, 530, 730, 930, 1230, 1530 mm)
(distance from the underside of the cable tray to the underside of the tabletop: 130 mm)
Colour: Black, white or silver
Goes with: Oberon



CABLE TRAY **OACT33**

Single cable tray with fasteners that is mounted on the beam. Available in several lengths.

Dimensions: 330x132x69
(available in the following lengths: 330, 530, 730, 930, 1230, 1530 mm)
(distance from the underside of the cable tray to the underside of the tabletop: 146 mm)
Colour: Black, white or silver
Goes with: Series[E] one



CABLE TRAY **EACT33**

Basic version that fits tables without sliding tabletops. Mounted directly in the tabletop.

Dimensions: 33x13570
(available in the following dimensions: 330, 530, 730, 930, 1230, 1530 mm)
(distance from the underside of the cable tray to the underside of the tabletop: 146 mm)
Colour: Grey, silver, white and black
Goes with: All desks, non-sliding tabletop



CABLE TRAY **POCB1200**

Sturdy cable tray mounted between the frame brackets. Large space for cables, multiway sockets and adapters and with inbuilt lid to conceal everything. There are cut-outs in the ends to hide any cables running between the units. Add POCCV to bring cables down vertically towards the table legs.

Dimensions: 935x220x106 mm
(available in the following lengths: 1400, 1600, 1800, 2000 mm.)
Colour: Black, white or silver
Goes with: Polaris Duo



CABLE TRAY **TACT700, TACT400**

For fixed mounting with screws directly in the tabletop. The fasteners are pre-mounted when ordered. Easy access as it can be opened from both the front and rear. Can be earthed to shield electrical fields.

Dimensions: 700x180x100 (distance from the underside of the cable tray to the underside of the tabletop: 100 mm)
Colour: Black, white or silver
Goes with: All desks, non-sliding tabletop



CABLE TRAY

PACT93

PACT is specially customised for tables with a sliding tabletop. Mounted in beam. Can become conductive and shield electrical fields through earthing.

Dimensions: 1230x132 x69
(distance from the underside of the cable tray to the underside of the tabletop: 127 mm)

Colour: Black, white or silver

Goes with: Series[P] Sliding tabletop



CABLE TRAY

ACT1-870

Stylish and discreet cable management that is attached to the beam. Can be unhooked and folded down on each side. The chamfered edge catches the branch sockets when folded down.

Dimensions: 870x150x52 mm
(available in the following dimensions: 870, 1070, 1270, 1470, 1670 mm)
(distance from the underside of the cable tray to the underside of the tabletop: 73 mm in the highest position, 98 mm in the lowest position)

Colour: Black, white or silver

Goes with: Series[P]



CABLE TRAY

NACT1270

Discreet cable management, fastened to the beam and adjustable in two heights. Can be unhooked and folded down on either side. The chamfered edge catches the branch sockets when folded down.

Dimensions: 1270x150x52
(available in the following dimensions: 270, 470, 670, 870, 1070, 1270, 1470, 1670, 2070 mm) (distance from the underside of the cable tray to the underside of the tabletop: 73 mm in the highest position, 98 mm in the lowest position)

Colour: Black, white or silver

Goes with: Nano, Nexus



CABLE TRAY

NBACT1052

Spacious cable tray that is laterally foldable for easy access. The fastener is mounted on the beam and the cable tray is hooked in place.

Dimensions: 1052x370x83
(available in the following dimensions: 1052, 1252, 1452, 1652, 1852 mm)
(distance from the underside of the cable tray to the underside of the tabletop: 123 mm)

Colour: Silver

Goes with: Nano and Nexus bench



CABLE TRAY

POACT870

Spacious and adjustable cable tray to collect cables and power sockets. The fastener is mounted on the beam. Easy to angle downwards in both directions or to unhook fully.

Dimensions: 870x150x52
(available in the following lengths: 1070, 1270, 1470, 1670 mm)

Colour: Black, white or silver

Goes with: Polaris



VERTICAL CABLE COLLECTOR
POCCV

Practical and vertical cable tray that leads the cables vertically downwards towards the cable outlet box in the flooring. Used together with cable tray POCB. Great option when access to the mains is from a floor box.

Dimensions: Height 407 mm
Colour: Black, white or silver
Goes with: Polaris Duo



CABLE COLLECTOR
NACC

Stylish and vertical cable collector in metal that attaches to round legs.

Dimensions: Height 490 mm,
Ø50 mm legs
Colour: Black, white or silver
Goes with: Nexus and Nano



CABLE COLLECTOR
NACCA

Stylish and vertical cable collector in metal that attaches to rectangular and square legs.

Dimensions: Height 568 mm,
50 mm square/rectangular legs
Colour: Black, white or silver
Goes with: Nexus and Nano



CABLE HOLDER
A4CS

Flexible cable holders that close using Velcro. Sold in packs of 4.

Colour: Black
Goes with: Universal



CABLE HOLDER
OA3CC

Fasten the holder smoothly to the beam. Sold in packs of 3.

Colour: Grey
Goes with: Series[E] one



CABLE CLIPS
1CH

A solution to get cables in order. Mounted on beam. Sold in packs of 4.

Colour: Black
Goes with: Oberon, Nano and Nexus

CABLE BOX

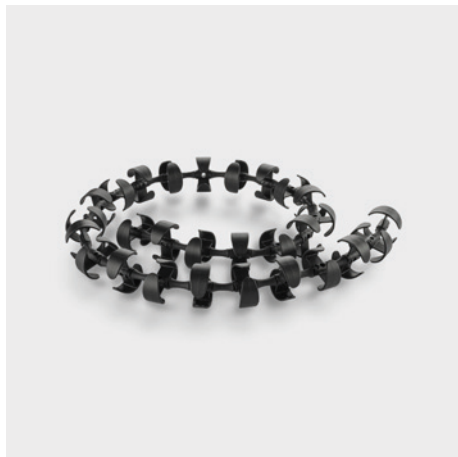
1NEXCB

Spacious box for easy cable management. Height adjustment.

Dimensions: 346x103x552 mm

Colour: Black, white or silver

Goes with: Nexus and Nano bench



CABLE UMBILICAL

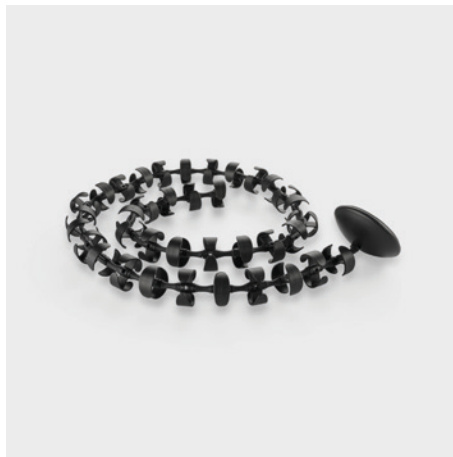
PAW110

Easily tidy up loose cables.
The umbilical is made of plastic and is mounted directly into the tabletop.
Can be fastened horizontally under tables, or down to the floor.
Can be joined together.
For normal table height.

Dimensions: Length 1100 mm

Colour: Black

Goes with: All tables at sitting height



CABLE UMBILICAL

PAW130

Easily tidy up loose cables.
The umbilical is made of plastic, has a foot, and is mounted directly into the tabletop.
Can be fastened horizontally under tables, or down to the floor.
Can be joined together.
For higher table heights.

Dimensions: Length 1300 mm

Colour: Black

Goes with: All sit & stand tables



CABLE RISER

EAR

Stylish, fabric-covered solution made of conductive material to gather cables. Two separate plastic channels inside. Zip on the outside. Can be connected to the floor, ceiling or wall.

Dimensions: Length 800 mm

Colour: Dark grey

Goes with: All tables at sitting height



CABLE RISER
EAR SS

Stylish, fabric-covered solution made of conductive material to gather cables. Two separate plastic channels inside. Zip on the outside. Can be connected to the floor, ceiling or wall.

Dimensions: Length 1350 mm
Colour: Dark grey
Goes with: All sit & stand tables



CABLE COLLECTOR
EACC, EACC30

Simple solution for collecting cables. The collector is made of plastic, and the diameter of 20 mm holds 4-6 cables. Sold in lengths per 3 metre intervals.

Dimensions: EACC 3 metre interval, EACC30 30 metres
Colour: Light grey
Goes with: Universal



TOOL FOR CABLE COLLECTOR
EACCT

Used in combination with cable collector EACC, EACC30. Simplifies the feeding of cables through the plastic pipe.



ACT-1



CPU HOLDERS

A clean and professional impression provides a pleasant working environment. Fasten the computer under the tabletop to create free space, which makes it easy to keep your desk and floor tidy. It also helps you to avoid annoying noise from the computer.



CPU HOLDER 1F EACH1F, OACH1F

A wide strap around the computer provides a stable vertical suspension. The fastener is mounted in the tabletop. Rotating Does not fit tables with a sliding tabletop. Not lockable. For OACH1F, mount the fastener on the beam.

Dimensions: Max. dimensions of computer 500x225 mm. Minimum computer dimensions 257x90 mm.

Max. weight: 20 kg

Colour: Silver

EACH1F Goes with: Series[E] one, Series[P] and Oberon

OACH1F Goes with: Series[E] one



CPU HOLDER 1

EACH1, NACH1, OACH1, OBACH1

A wide strap around the computer provides a stable vertical suspension. The fastener is mounted in the tabletop. Height adjustment. Easy to rotate and slide forwards or backwards. Does not fit tables with a sliding tabletop. Not lockable.

Colour: Silver

Max. weight: 20 kg

EACH1

Dimensions: Max. dimensions of computer 500x225 mm. Minimum computer dimensions 257x90 mm.

Goes with: Series[E] one, Series[P] and Oberon

NACH1

Dimensions: Max. dimensions of computer 460x240 mm. Minimum computer dimensions 257x90 mm.

Goes with: Nano and Nexus

OACH1, OBACH1

Dimensions: Max. dimensions of computer 500x225 mm. Minimum computer dimensions 257x90 mm.

Goes with: Series[E] one and Oberon



CPU HOLDER 2

EACH2, NACH2, OACH2, OBACH2

Elegant and vertical computer suspension. The fastener is mounted in the tabletop. Possible to adjust the height, slide forwards and backwards, and rotate. Does not fit tables with a sliding tabletop. Not lockable.

Colour: Silver

Max. weight: 20 kg

EACH2

Dimensions: Max. dimensions of computer 510x240 mm. Min. dimension of computer 290x90 mm.

Goes with: Series[E] one, Series[P], Oberon and Polaris

NACH2

Dimensions: Max. dimensions of computer 445x240 mm. Min. dimension of computer 290x90 mm.

Goes with: Nano and Nexus

OACH2, OBACH2

Dimensions: Max. dimensions of computer 510x240 mm. Min. dimension of computer 290x90 mm.

Goes with: Series[E] one and Oberon



CPU HOLDER 5

EACH5, NACH5, OACH5, OBACH5

Simple vertical suspension of a computer with two dark grey straps. The fastener is mounted in the tabletop. Possible to adjust the height, slide forwards and backwards, and rotate. Not lockable. EACH5 does not fit tables with sliding tabletops. For NACH5 and OACH5, the fastener is mounted in the beam.

Colour: Silver

Max weight: 15 kg

EACH5

Dimensions: Max. dimensions of computer 510x240 mm. Minimum computer dimensions 200x90 mm.

Goes with: Series[P], Oberon and Polaris

NACH5

Dimensions: Max. dimensions of computer 480x240 mm. Minimum computer dimensions 200x90 mm.

Goes with: Nano and Nexus

OACH5, OBACH5

Dimensions: Max. dimensions of computer 480x240 mm. Minimum computer dimensions 200x90 mm.

Goes with: Series[E] one and Oberon

MONITOR ARMS

During your work day, you spend a lot of your time in front of the computer screen. This makes functionality and customisation important. Tilt, rotate and move the screen to easily position it exactly where you want it.



TA50M



MONITOR ARM

TA50M

Can be swivelled or rotated. Mounted with a clamp in the tabletop. A quick monitor fastener is included and can be supplemented with an iPad holder. Integrated cable channel in the first part of the arm.

Fastener: VESA 75/100

Dimensions: Max. length 457 mm. Height adjustable 341 mm.

Load: 9 kg

Colour: Black or white

Goes with: Universal



HOLDER FOR IPAD

TAI50

Holder for iPad 1, 2 and 3 that attaches to an adjustable monitor arm from our range. The plate can be turned and rotated.

Load: 9 kg

Colour: Silver

Goes with: TA50M



MONITOR ARM

TA61M

Four-jointed single arm. With a clamp for mounting on tabletops. Can be swivelled or rotated.

Dimensions: Max. length 500 mm, max. height 370 mm

Max. weight: 14 kg

Colour: Silver or white

Goes with: Universal



MONITOR ARM

TA62M

Four-jointed duo arm. With a clamp for mounting on tabletops. Can be swivelled or rotated. Provides limited setting options together with a desk-top screen.

Dimensions: Max length 890 mm, max height 370 mm

Max. weight: 14 kg

Colour: Silver or white

Goes with: Universal



GAS MONITOR ARM

TA71M, TA7151

Single arm with gas suspension that allows the screen to move around effortlessly. With a clamp for mounting on tabletops. Fastener for mounting in 51 mm diameter holes. Can be swivelled or rotated.

Dimensions: Max. length 542 mm, max. height 510 mm

Load: 3-8 kg

Colour: Black, white or silver

Goes with: Universal



GAS MONITOR ARM HEAVY

TA71HM, TA71H51

Single arm with gas suspension that allows the screen to move around effortlessly. Withstands heavier loads. With a clamp for mounting on tabletops. Fastener for mounting in 51 mm diameter holes. Can be swivelled or rotated.

Dimensions: Max. length 640 mm, max. height 580 mm

Load: 8-19 kg

Colour: Silver or white

Goes with: Universal



GAS MONITOR ARM

TA71FR

Single arm with gas suspension that allows the screen to move around effortlessly. A fastener for mounting in flexrail. Can be swivelled or rotated.

Dimensions: Max. length 542 mm, max. height 510 mm

Load: 3-8 kg

Colour: Black, white or silver

Goes with: All tables with flexrail



GAS MONITOR ARM

TA72M, TA7251

Duoarm with gas suspension that allows the screen to move around effortlessly. With a clamp for mounting on tabletops. Fastener for mounting in 51 mm diameter holes. Can be swivelled or rotated. Provides limited setting options together with a desktop screen.

Dimensions: Max. length 1000 mm, max. height 510 mm

Load: 3-8 kg per arm

Colour: Black, white or silver

Goes with: Universal



GAS MONITOR ARM HEAVY

TA72HM, TA72H51

Arm with gas suspension and equipped with twinbar for mounting two monitors in parallel. Withstands heavier loads. With a clamp for mounting on tabletops. Also with fastener for mounting in 51 mm diameter holes. Can be swivelled or rotated. Provides limited setting options together with a desktop screen.

Dimensions: Max. length 790 mm, max. height 580 mm

Load: 8-19 kg

Colour: Silver or white

Goes with: Universal



GAS MONITOR ARM

TA72FR

Duoarm with gas suspension that allows the screen to move around effortlessly. A fastener for mounting in flexrail. Can be swivelled or rotated. Provides limited setting options together with a desktop screen.

Dimensions: Max. length 1000 mm, max. height 510 mm

Load: 3-8 kg per arm

Colour: Black, white or silver

Goes with: All tables with flexrail



TWINBAR

TAB71

Separate Twinbar for monitor arm TA71H. For retrofitting to make room for two monitors.

Dimensions: Max. length 790 mm, max. height 580 mm

Load: 17 kg

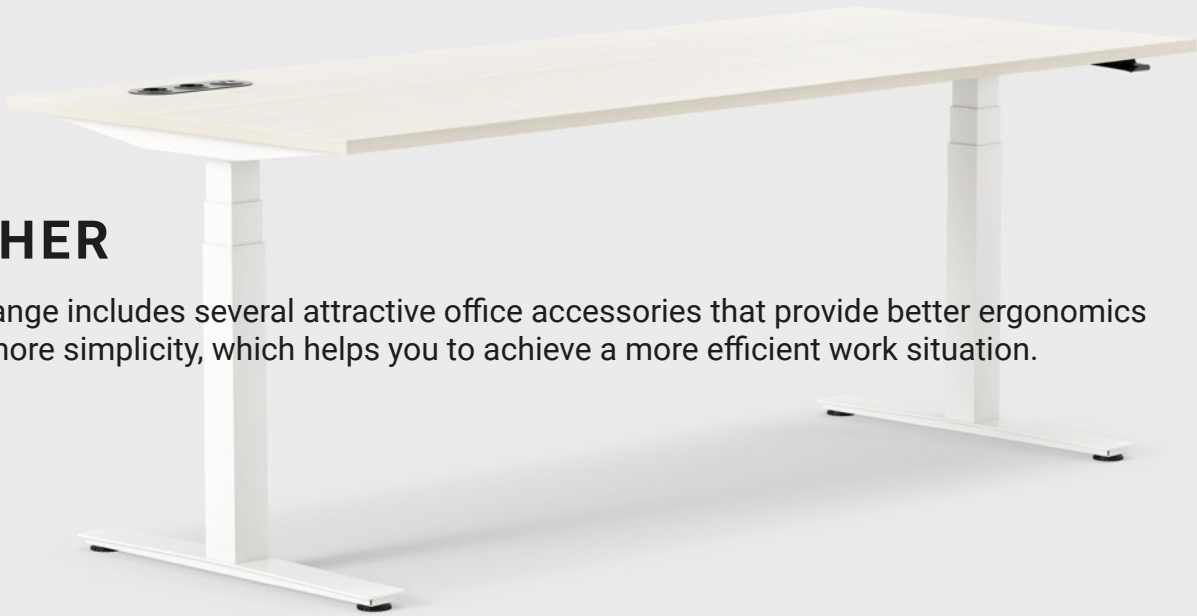
Colour: Silver or white

Goes with: TA71H51, TA71HM



OTHER

Our range includes several attractive office accessories that provide better ergonomics and more simplicity, which helps you to achieve a more efficient work situation.



TABLETOP STORAGE
TAR0180

Achieve a tidy impression on your desk by storing small items such as pens and post-it blocks under the tabletop. Easy to twist forward if necessary. Mounted on tabletops without a frame.

Dimensions: Length 339 mm, width 200 mm and height 34 mm.

Colour: Black

Goes with: Universal



ARMREST
EAAR

Relief for forearm. Provides better ergonomics when working frequently between keyboard and mouse. Easy to clean. In artificial leather and adjustable metal fasteners (thickness of tabletop 10-40 mm).

Dimensions: Length 680 mm

Colour: Black

Goes with: Universal



EARTHING SET
EATE

Earthing cable trays, baskets, or socks to reduce alternating electrical fields. Includes a plug connection and ten earthing cables.

Goes with: All metal cable trays



SUCCESSFUL INTERIORS